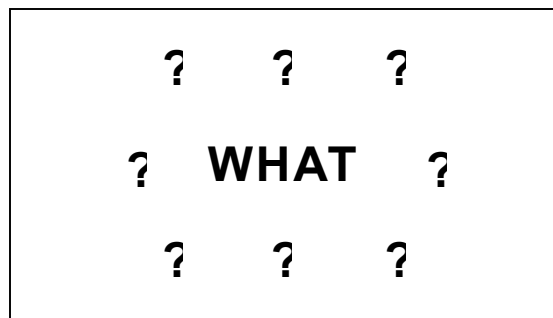
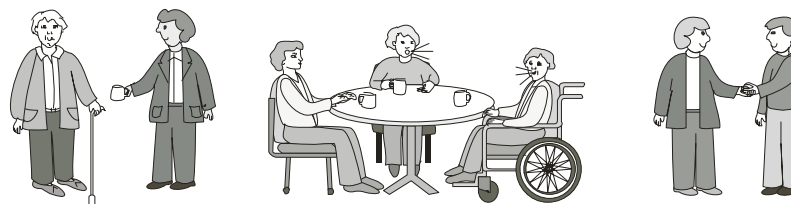


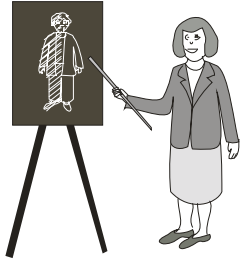
APHASIA INSTITUTE



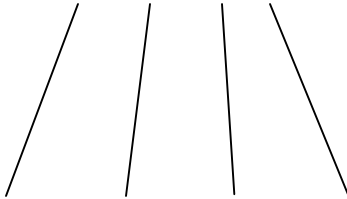
COMMUNITY OF PEOPLE AFFECTED BY APHASIA.



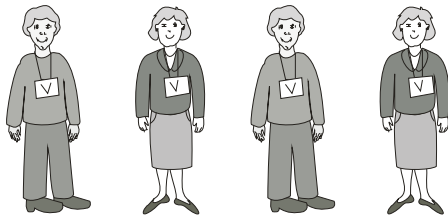
STAFF FOR OUR PROGRAMS AND SERVICES:



SLPs



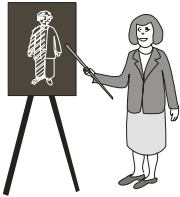
TRAIN and SUPERVISE



VOLUNTEERS who
deliver our programs.

IF YOU WANT TO ATTEND THE APHASIA INSTITUTE:

1.



(Insert therapist's name)



Your therapist will CONTACT the **Aphasia Institute**

2. **APHASIA INSTITUTE**



The **Aphasia Institute** will CONTACT you

3. **YOU**



4. An APPOINTMENT will be arranged for YOU and YOUR FAMILY



**YOU & YOUR
FAMILY**



APHASIA INSTITUTE

*We will **MEET** together so that:
you can **LEARN** about the **APHASIA INSTITUTE** and
we can **LEARN** about **YOU** and **YOUR FAMILY**.*

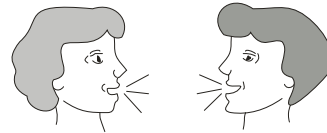
New members usually join our **INTRODUCTORY PROGRAM.**

THE INTRODUCTORY PROGRAM:

1. LEARN ABOUT APHASIA



2. IMPROVE COMMUNICATION & CONFIDENCE



3. FIND PEER SUPPORT



4. LOOK TO THE FUTURE

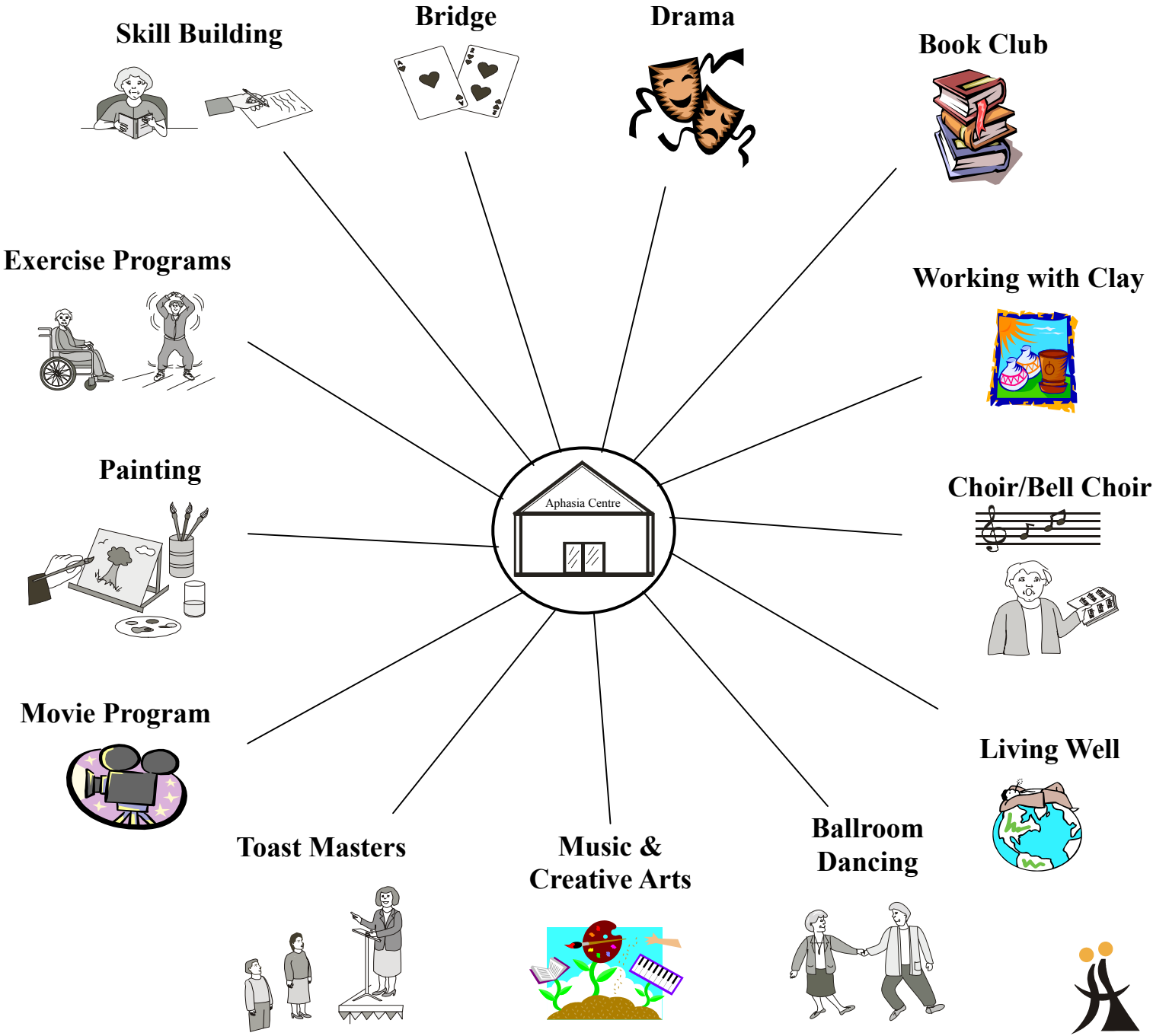


SOCIAL RECREATIONAL PROGRAMS/ COMMUNITY APHASIA PROGRAM:

Conversation Groups



AND...



**ARE YOU INTERESTED IN LEARNING
MORE ABOUT THE APHASIA INSTITUTE?**

✓ YES

✗ NO

MAYBE



building communication ramps

The Aphasia Institute
Pat Arato Aphasia Centre
73 Scarsdale Road
Toronto, ON M3B 2R2
Telephone: 416 226-3636
Fax: 416 226-3706
e-mail: aphasia@aphasia.ca
Website: www.aphasia.ca



building communication ramps